

GS1 showerhead

up to
76%
savings



Gjosa technology **JET FUSION**®

- Easy to install
- 2 years warranty
- For individuals and camping
- Available in 3 colors

Water saver showerhead composed of assembled ABS shells with rubber grip on the handle.

A removable mesh gasket filter is already inserted inside.

The handshower can be plugged by hand to any standard GSP 1/2 inch shower hose without any tools.



Black
ref. GS1100V02R



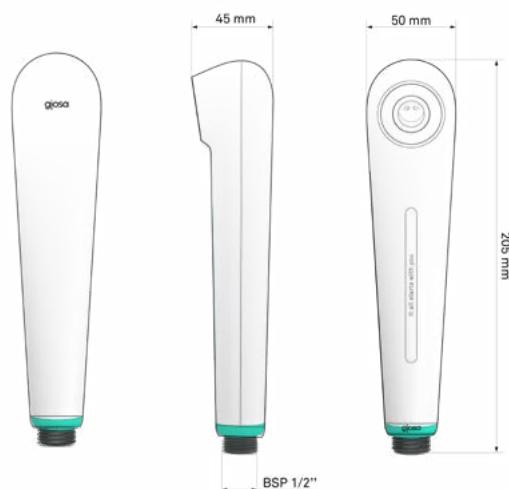
Cool Grey
ref. GS1103V02R



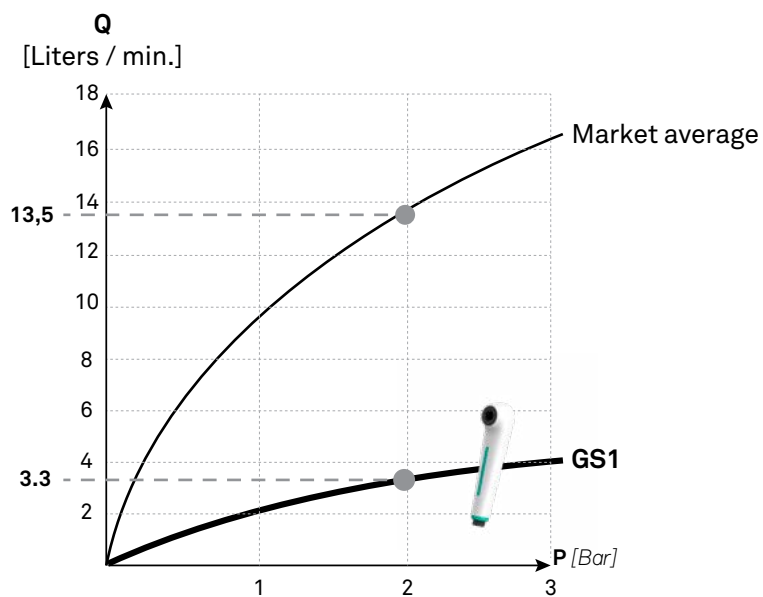
White
ref. GS1104V02R

Technical datas

- Total weight : 120g
- Water consumption : 4.0 l/min. @ 2.0 bars
- Materials : ABS/POM/Silicon
- Connector thread : BSP 1/2 inch



Water saving performance

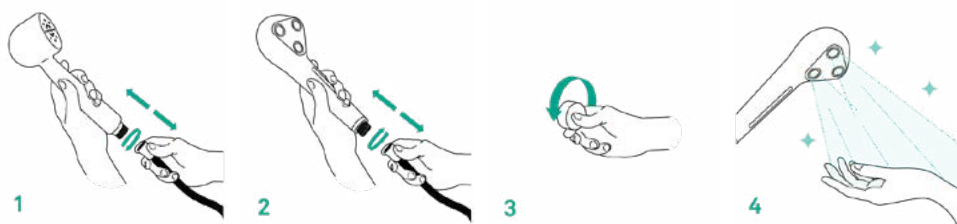


Scan for calculate your savings



1 bar	2 bars	3 bars	
2.3 l/min.	3.3 l/min.	4.0 l/min.	GS1
10 l/min.	13.5 l/min.	16.5 l/min.	Market average

Installation and care



Scan for care tips

