

# GS3 showerhead

up to  
**65%**  
savings



## Gjosa technology **JET FUSION**®

- Easy to install
- 2 years warranty
- For hospitality, professionals and individuals
- Available in 3 colors

Water saver showerhead composed of assembled ABS shells with rubber grip on the handle.

A removable mesh gasket filter is already inserted inside.

The handshower can be plugged by hand to any standard GSP 1/2 inch shower hose without any tools.



Black  
ref. GS3100V02R



Cool Grey  
ref. GS3103V02R



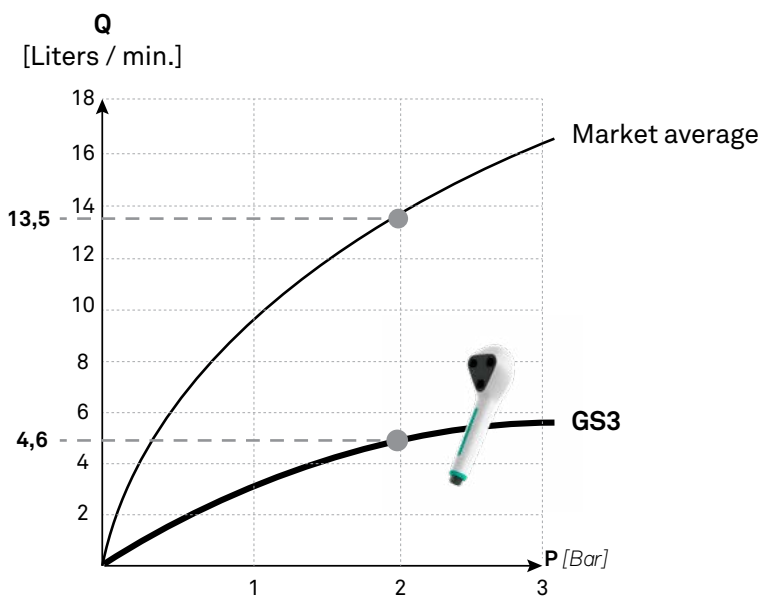
White  
ref. GS3104V02R

## Technical datas

- Total weight : 160g
- Water consumption : 4.5 l/min. @ 2.0 bars
- Materials : ABS/POM/Silicon
- Connector thread : BSP 1/2 inch



## Water saving performance

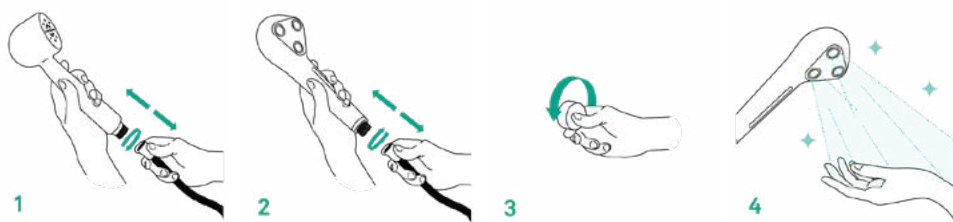


Scan for calculate your savings



1 bar	2 bars	3 bars	
3.3 l/min.	4.6 l/min.	5.7 l/min.	<b>GS3</b>
10 l/min.	13.5 l/min.	16.5 l/min.	Market average

## Installation and care



Scan for care tips

